

2025

Boone County Sheriff's Office 1st Quarter Report





Table Of Contents

GUIDING PRINCIPLES	3
MESSAGE FROM THE SHERIFF	4
COMMAND STRUCTURE	5
COMMUNICATIONS DIVISION	6
ENFORCEMENT DIVISION	7
INVESTIGATIONS DIVISION	8
CORRECTIONS DIVISION	9
COURTHOUSE DIVISION	10
ANIMAL CONTROL	11
CONTACT INFORMATION	12



Guiding Principles

VISION

The Boone County Sheriff's Office strives to adhere to the highest standards and reflect the diversity of its community members. The people of our community and members of the Sheriff's Office must be united in their commitment to addressing crime, violence, and quality-of-life issues by engaging one another in problem-solving partnerships. Recognizing that integrity is the foundation of our profession, we endeavor to preserve and protect the public trust placed in us by adhering to the highest standards of honesty and ethical practices.

MISSION

The Boone County Sheriff's Office, in partnership with the citizens of Boone County, provides ethical and professional services that promote and protect the well-being, safety, and security of all people in our county; and to operate a safe constitutional jail system. The Boone County Sheriff's Office is committed to providing a safe and supportive community through honest, competent, professional and proactive law enforcement services.

FAIR & EQUITABLE PRACTICES

The Boone County Sheriff's Office is committed to treating everyone fairly and equitably. We remain an agency committed to our five value points: Integrity, Leadership, Loyalty, Professionalism, and Commitment. Continuing these practices, along with current policing models, we will continue to enhance our trust and partnership with Boone County Citizens.

A Message From The Sheriff

To the citizens of Boone County,

As we wrap up the first quarter of 2025, I want to take a moment to recognize the hard work and dedication of the men and women of the Boone County Sheriff's Office. Across all areas of our agency—including patrol, jail operations, and emergency communications—our team continues to work around the clock to keep Boone County safe and running smoothly.

This quarter, our deputies responded to a wide range of calls, made key arrests, and maintained a strong presence in the community through both enforcement and outreach. At the jail, our staff managed daily operations with professionalism, focusing not only on safety and security, but also on inmate care and preparation for reentry. Meanwhile, our 911 Communications team remained a steady, calm voice during times of crisis—efficiently coordinating emergency responses and providing critical support to both the public and our personnel in the field.

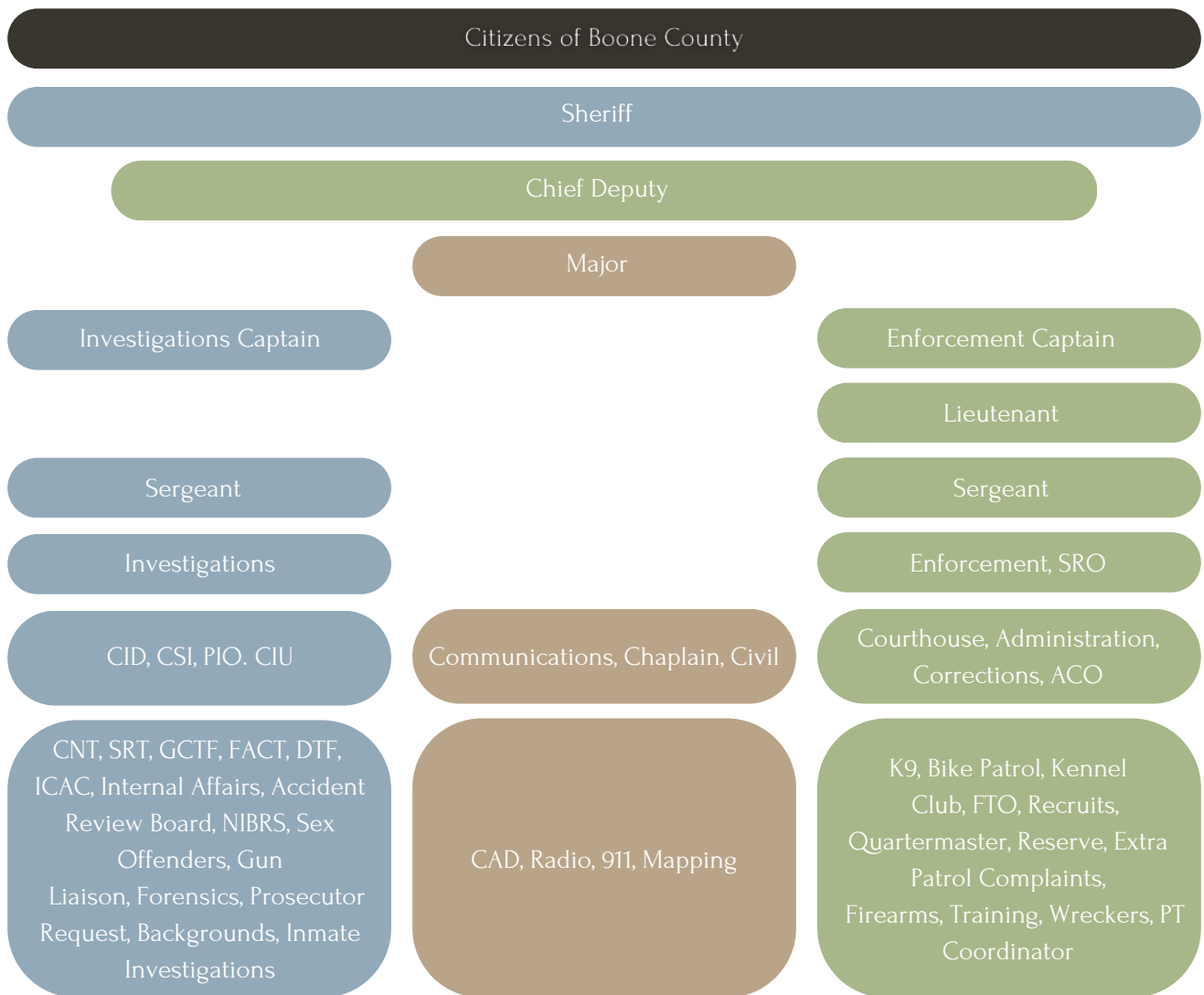
Every call answered, every shift worked, and every challenge met is a reflection of the commitment our team has to serving Boone County with integrity and excellence. The full 1st Quarter Report, which includes more detailed data and insight, is available on our website and at the Sheriff's Office for those who would like to learn more.

Thank you for your continued trust and support!

Sheriff Anthony “Tony” Harris



Command Structure



Communications

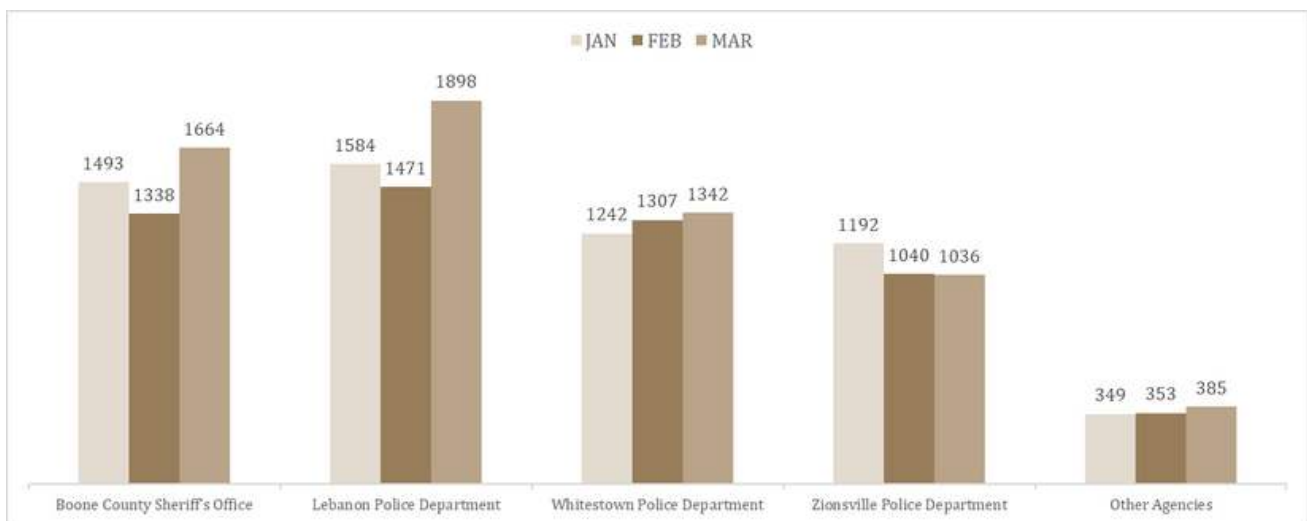
Calls For Service

January	February	March
5,611	5,683	6,065

Total:
17,059

13.44% increase
from Q1 2024

Agency Calls For Service



Calls to Center

911 Calls
5,787

+

Administrative Calls
15,131

=

Total Calls
20,918

Enforcement

Calls For Service

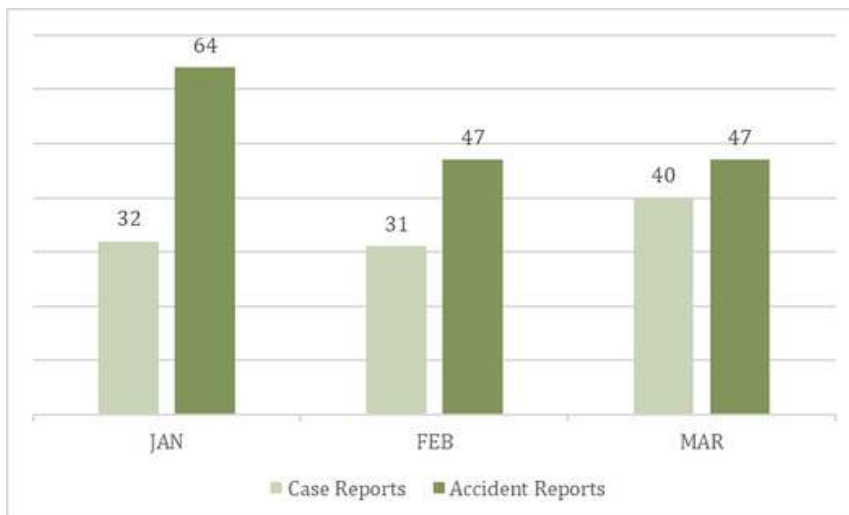
January	February	March
1,493	1,338	1,664

Total:
4,495

15.76% increase
from Q1 2024

26.34% of current
total calls for service

Reports



Accident Reports

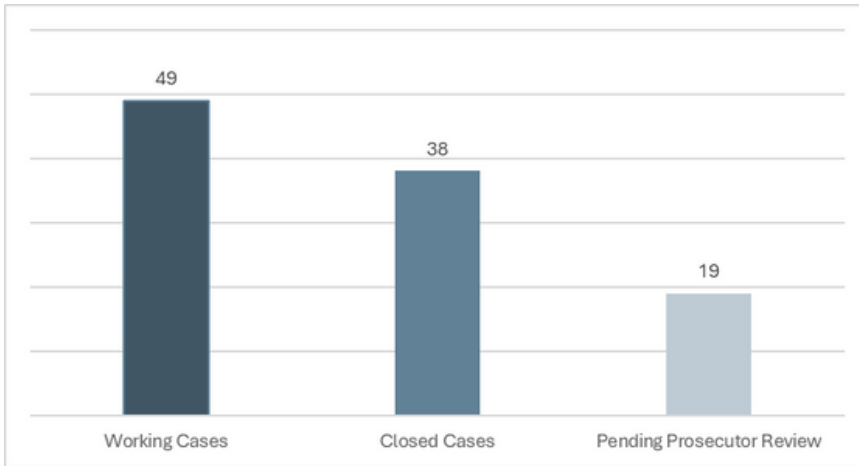
Property Damage	123
Personal Injury	34
Fatal	1

Arrests

$$\frac{\text{Alcohol}}{16} + \frac{\text{Drug}}{2} + \frac{\text{Other}}{45} = \frac{\text{Total}}{63}$$

Investigations

General Summary



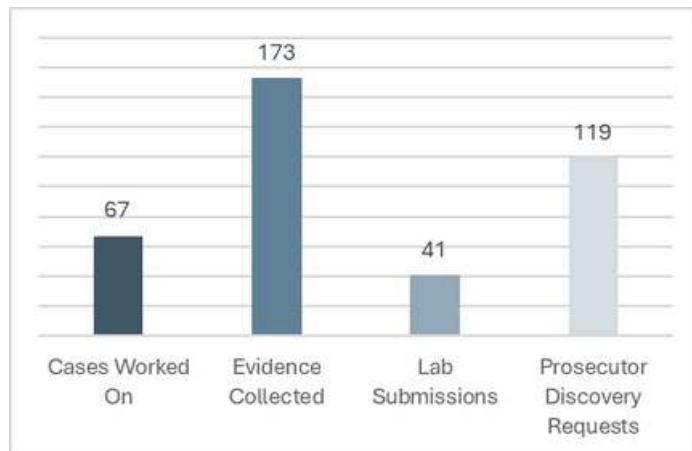
53
Search Warrants
Completed

19
Callouts

Crime Scene Investigations

86,061
Gigabytes
Searched

50
Callouts



Criminal Intelligence Unit

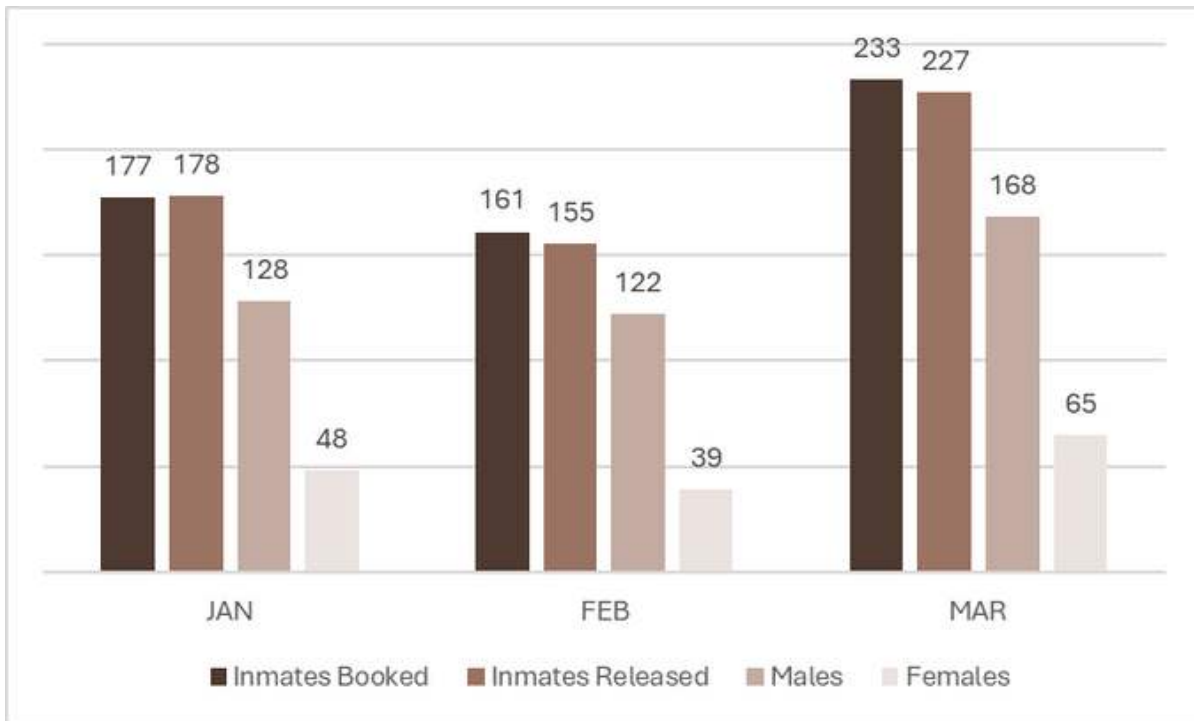
- 88 Traffic Stops
- 9 K-9 Assists
- 4 Special Details
- 5 Warrant Services
- 4 Case Reports
- 6 Arrests

Sex and Violent Offender Statistics

- 83 Living In County
- 56 Working In County
- 1 Failure To Register
- 145 Verifications

Corrections

Corrections Summary



1,207
Charges

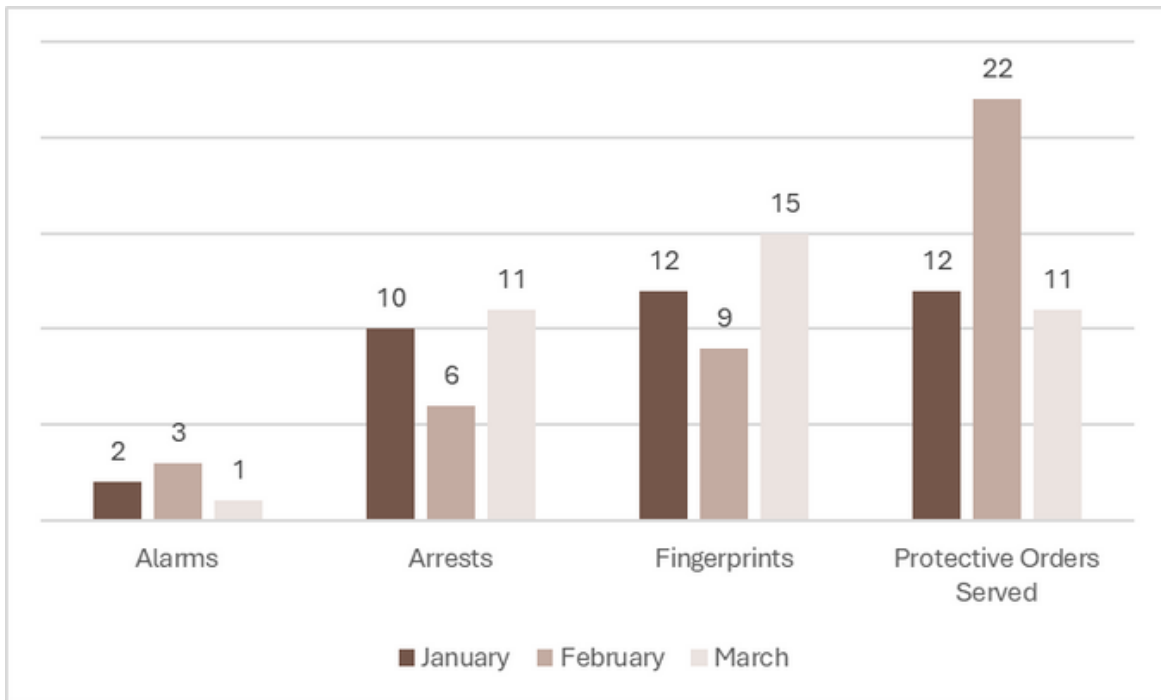
135
Jail Incidents

131.3
ADP
Average Daily Population

219
Warrants Served

Courthouse

Response Summary



133

Knives Detected

21

Mace Detected

9

Guns Detected

12,706
Persons Scanned



Animal Control

37	DOGS BROUGHT TO KENNELS
18	DOGS RETURNED TO OWNER
6	LOVE PET PROJECT
3	HUMANE SOCIETY
3	OTHER OUTSIDE AGENCY
6	CURRENTLY AT KENNELS
4	PENDING CHARGES
1	ACTIVE INVESTIGATION
6	CITATIONS

Connect With Us



1905 Indianapolis Avenue
Lebanon, IN 46052

Have a tip?

tips@co.boone.in.us

Records Request?

boonecountyin-sheriff.nextrequest.com/

Past Reports?

[www.boonecountyindianasheriff.com/divisions/
administration/sheriffs-office-business/](http://www.boonecountyindianasheriff.com/divisions/administration/sheriffs-office-business/)

@BCSOIN  

...search us in the App Store or Google Play Store

PHONE OPTIONS:

(765) 482-1412

- #1 Corrections
- #2 Administration
- #3 Sex Offenders
- #4 Communications
- #5 Deputies Voicemail
- #6 Investigations
- #7 Maintenance

www.boonecountyindianasheriff.com